

NOTE: DO NOT DISCARD the Parts List from the Instruction Bulletin. Place the Parts List in the appropriate place in the machine manual for future reference. Retaining the Parts List will make it easier to reorder individual parts and will save the cost of ordering an entire kit.

NOTE: Numbers in parenthesis () are reference numbers for parts listed in Bill of Materials.

Installation instructions for **kit number 9006023**

SYNOPSIS:

This kit contains the parts needed to install a vacuum wand kit on S20 machines. Please follow step-by-step instructions.

SPECIAL TOOLS / CONSIDERATIONS: NONE

(Estimated time to complete: 1 hour)

PREPARATION:

1. Park the machine on a clean level surface, turn off the machine, remove the key, and set the parking brake.

FOR SAFETY: Before leaving or servicing machine, stop on level surface, turn off machine, and remove key.

INSTALLATION:

1. Cut the perforated section from the interior of the hopper cover. Refer to Fig. 1.

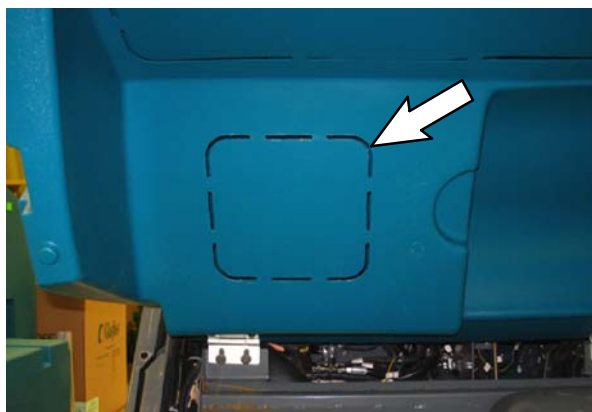


FIG. 1

2. Place the vacuum wand adapter onto the front of the hopper and mark the locations for the four 0.375" holes and the 2.087" hole onto the hopper. Refer to Fig. 2 and Fig. 3.

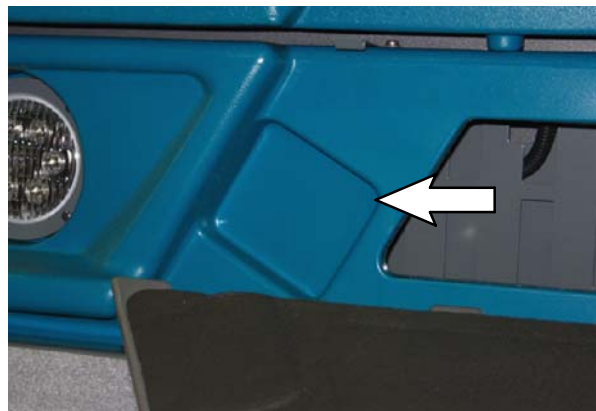


FIG. 2

3. Place the vacuum wand door into the hopper and mark the locations for the two 0.276" holes onto the hopper. Refer to Fig. 3.
4. Use a hole saw to cut a 2.087" hole into the hopper. Refer to Fig. 3.
5. Drill four 0.375" holes into the hopper. Refer to Fig. 3.
6. Drill two 0.276" holes into the hopper. Refer to Fig. 3.

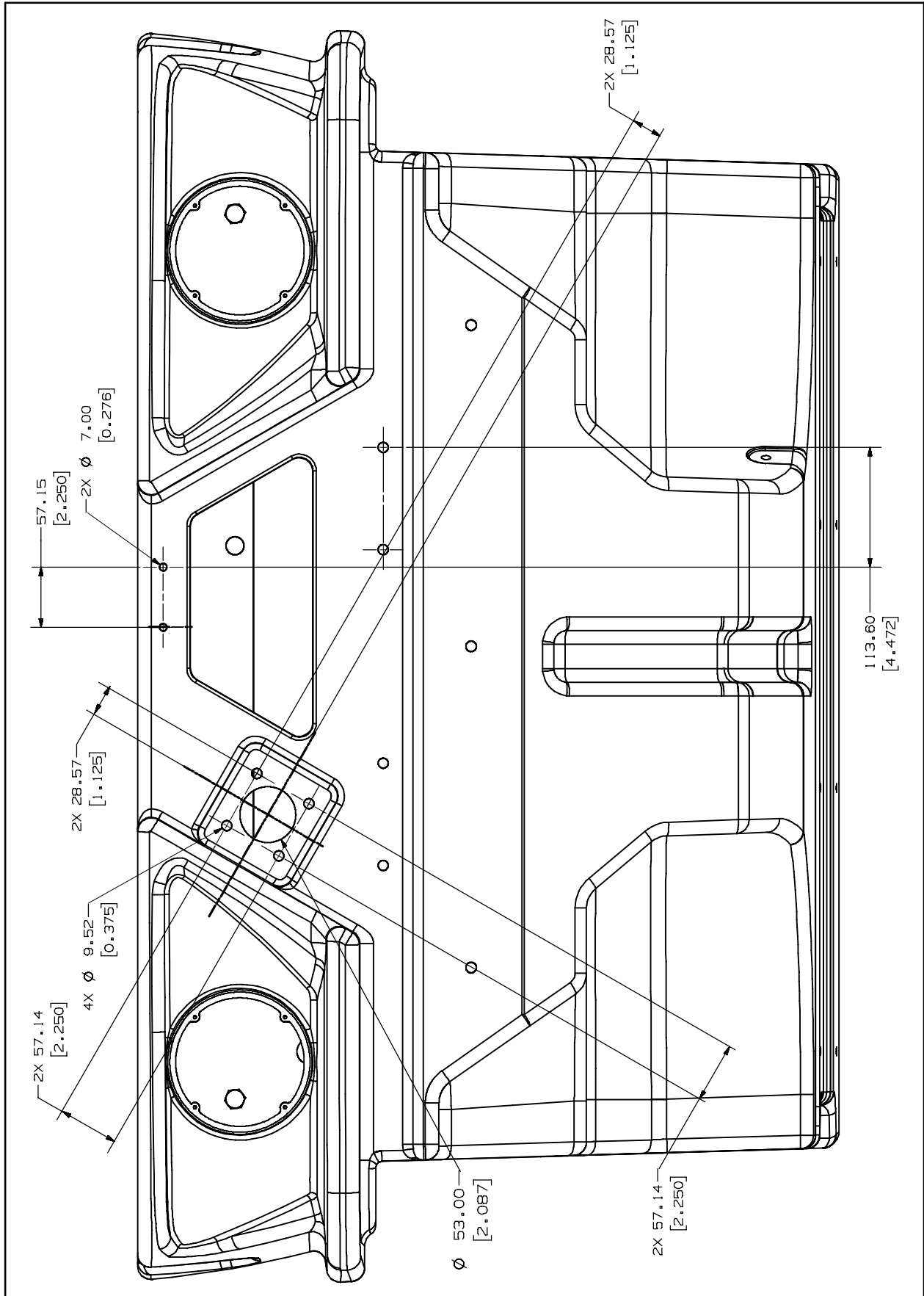


FIG. 3

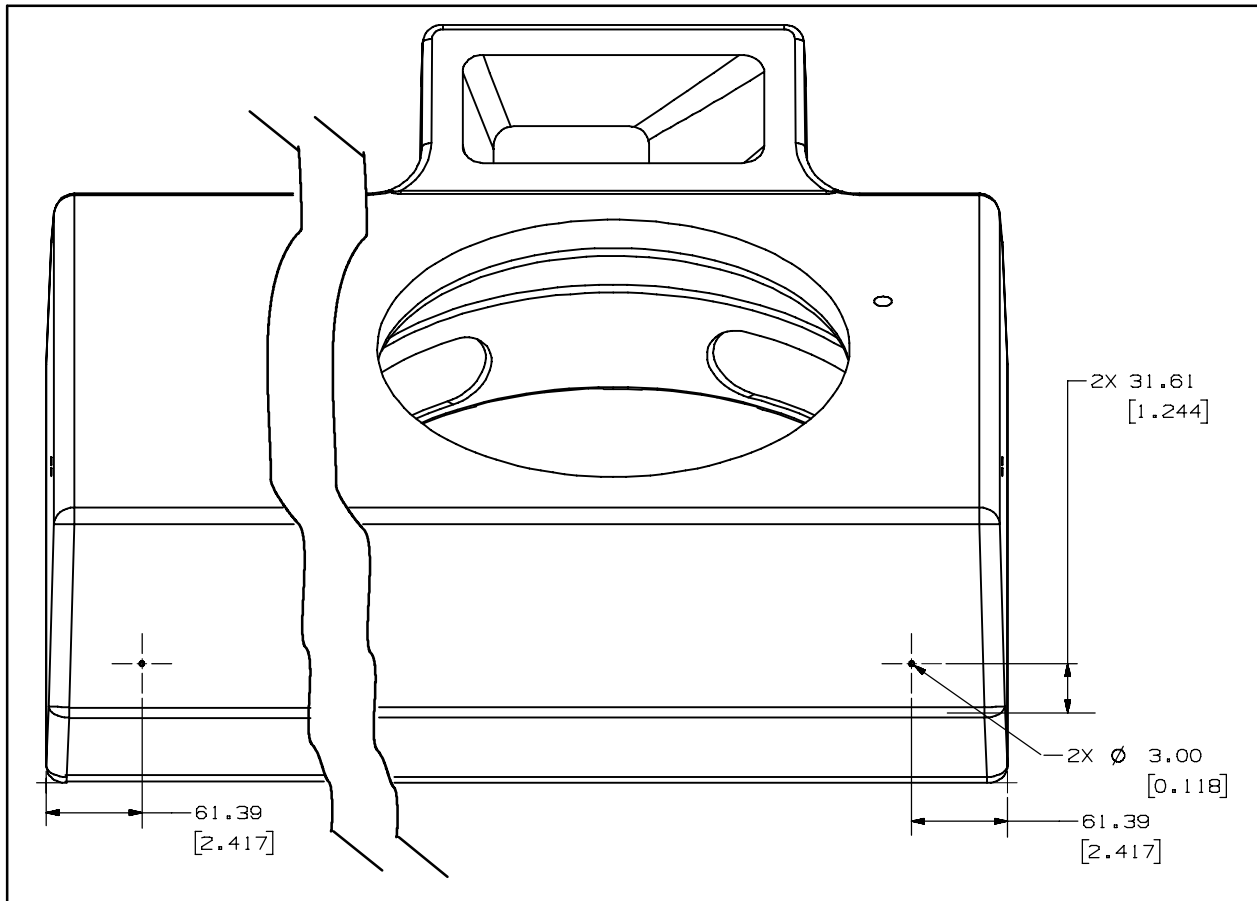


FIG. 4

7. Drill two 0.0118" holes into the filter cover. Refer to Fig. 4.
8. Use four hex screws (10), four flat washers (11), and four hex nuts (12) to install the vacuum wand adapter (1) and vacuum wand seal (1) onto the hopper. Refer to Fig. 5.

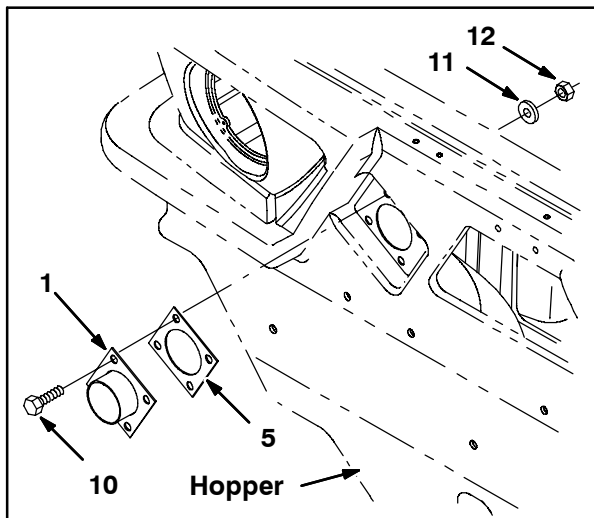


FIG. 5

9. Install the vacuum wand door gasket (2) onto the vacuum wand door. Refer to Fig. 6.

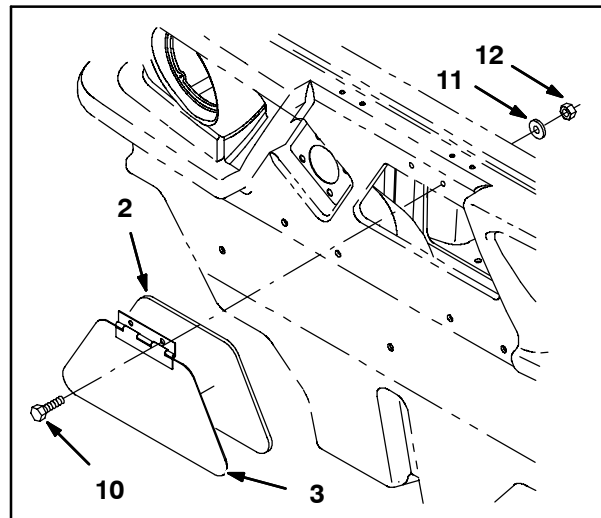


FIG. 6

10. Use two hex screws (10), two flat washers (11), and two hex nuts (12) to install the vacuum wand door onto the hopper. Refer to Fig. 6.

11. Use a plastic pan screw (7) to install each clip (6) onto the filter cover. Refer to Fig. 7.

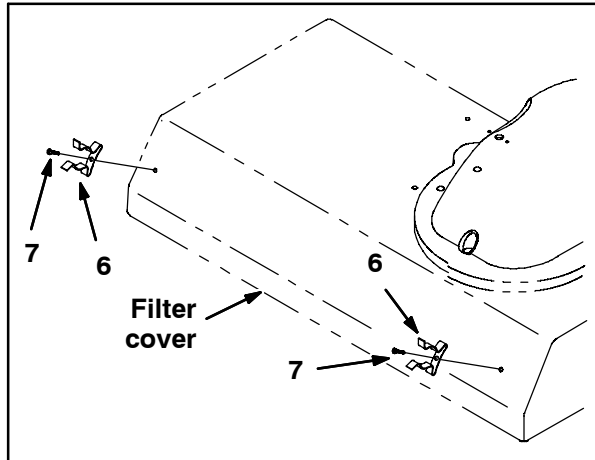


FIG. 7

12. Install the trim molding (8) around the edges of the square hole in the hopper cover. Refer to Fig. 8 and Fig. 10.

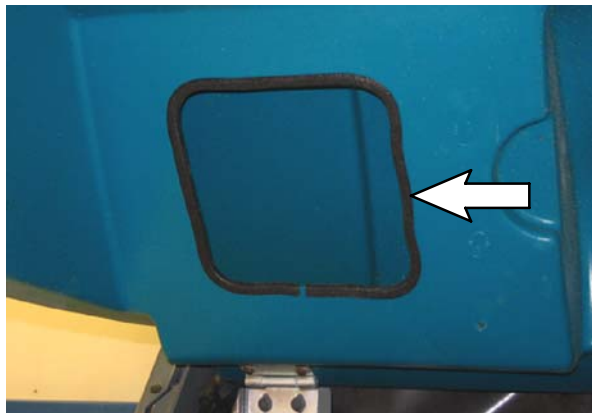


FIG. 8

13. Install the appropriate warning label (13) onto the vacuum wand (5). Refer to Fig. 10.

14. Stow the vacuum hose (12) into the storage area in the hopper cover and secure the vacuum wand (5) into the clips (6) on the filter cover. Refer to Fig. 9 and Fig. 10.

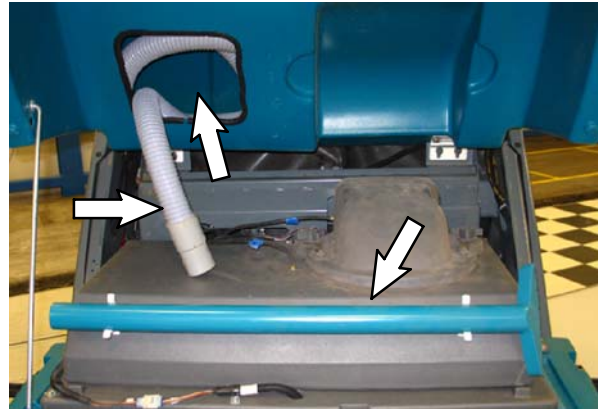


FIG. 9

15. Using the vacuum wand: Refer to the Operators Manual for instructions how to use the vacuum wand.

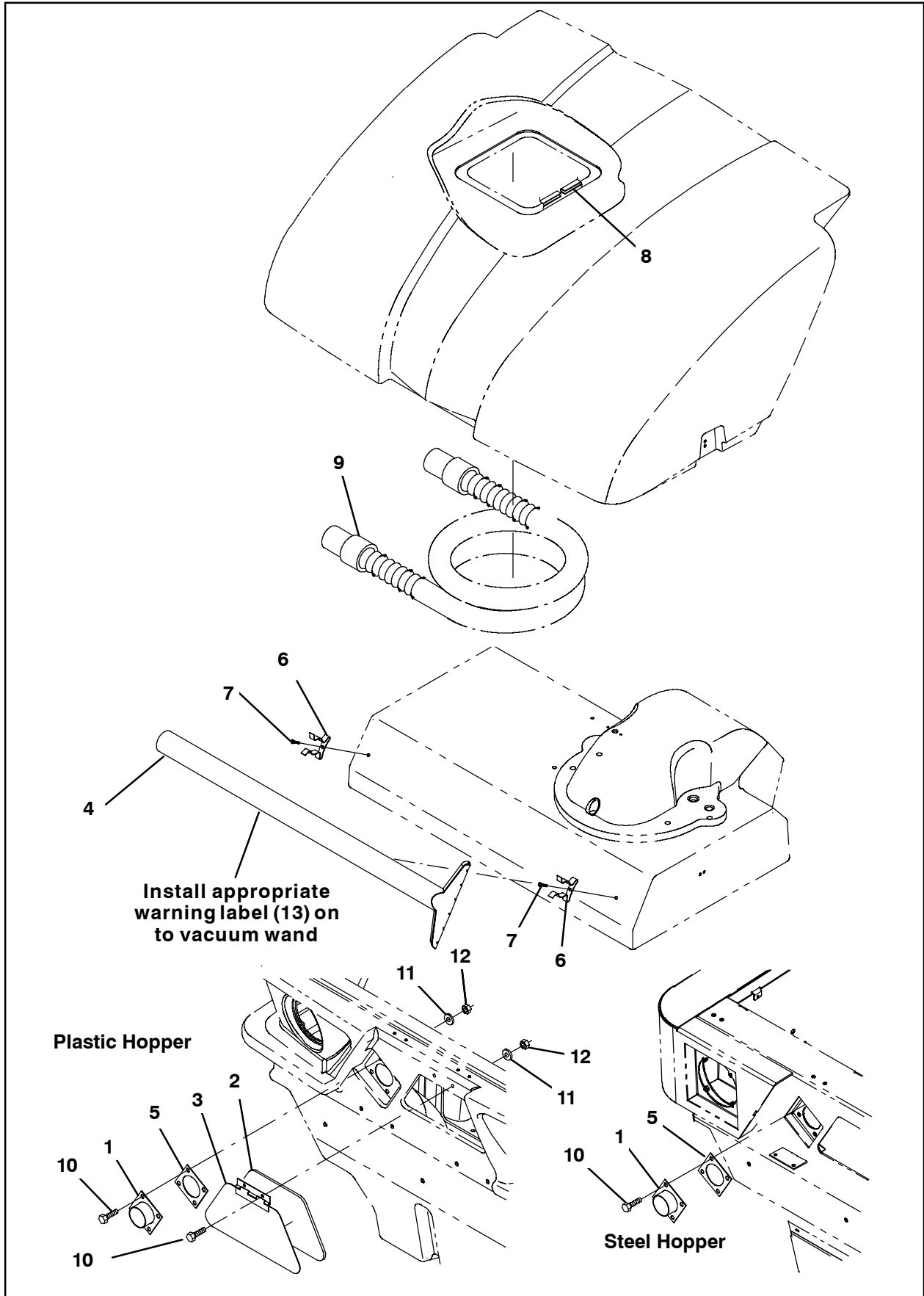


FIG. 10

Bill of Materials for Wand Kit, Vacuum, CI [S20] - 9006023

	Ref.	Tennant Part No.	Description	Qty.
▽		9006023	Wand Kit, Vacuum, CI [S20]	1
▲	1	1052620	Adapter Wldt, Wand, Vacuum	1
▲	2	1047635	Gasket, Door, Wand, Vacuum	1
▲	3	1047632	Door Wldt, Wand, Vacuum	1
▲	4	9006909	Wand, Vacuum, W/ Label, NA [S20]	1
▲	4	9006910	Wand, Vacuum, W/ Label, CE [S20]	1
▲	4	9006911	Wand, Vacuum, W/ Label, JP [S20]	1
▲	5	55965	Seal, Rbr, 0.06, Tube, Vacuum Wand	1
▲	6	67004	Clip, Grip, Finger, 1.00-1.88D,White Vyl	2
▲	7	360973	Screw, Pan, 12-16 X 0.50, F/ Plstc	2
▲	8	C460140	Molding, Trim, Pvc, .08-.11, Bulk 37"	1
▲	9	54009	Hose Assy, W/2Cuff, 2.0D 120L 2.0/2.0	1
▲	10	08716	Screw, Hex, M6 X 1.00 X 20, SS	6
▲	11	32490	Washer, Flat, 0.25, Std	6
▲	12	08708	Nut, Hex, Lock, M6 X 1.00, NL	6
▲	13	377099	Label, Warning [Do Not Propel W/ Vacuum]	1
▲	13	1011280	Label, Warning, Ce [Do Not Propel]	1
▲	13	1011279	Label, Warning [Do Not Propel], TJ	1

TENNANT COMPANY
P. O. Box 1452
Minneapolis, MN 55440-1452